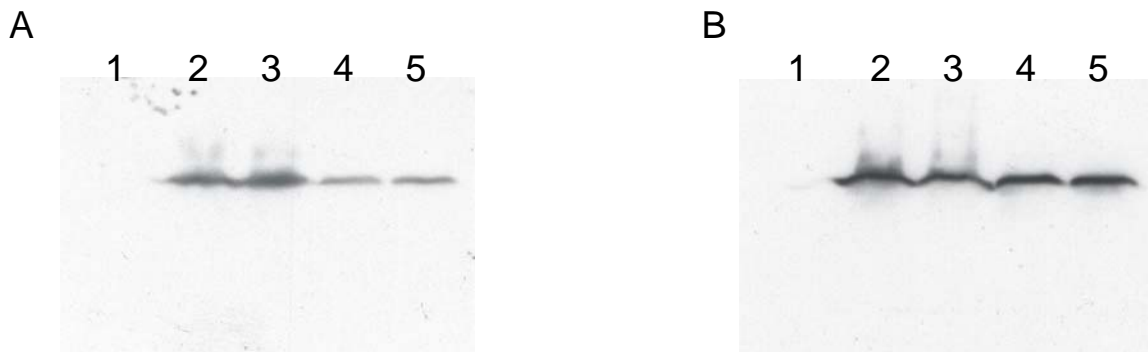


## Supplemental Data

### Asf1 Mediates Histone Eviction and Deposition during Elongation by RNA Polymerase II

Marc A. Schwabish and Kevin Struhl



Lane	Contents
1	Untagged Asf1 strain in YPD
2	(Myc) <sub>18</sub> -Asf1 in YPD
3	(Myc) <sub>18</sub> -Asf1 grown in YPD and heat shocked for 10 min at 39 °C
4	(Myc) <sub>18</sub> -Asf1 in galactose medium
5	(Myc) <sub>18</sub> -Asf1 grown in galactose medium, shifted into glucose medium for 4 min

Figure S1. Asf1 Expression Levels Remain Unchanged during Heat Shock or Carbon-Source Shift

Western blot against the Myc epitope with equal number of cells (A) or protein amount (B) loaded.

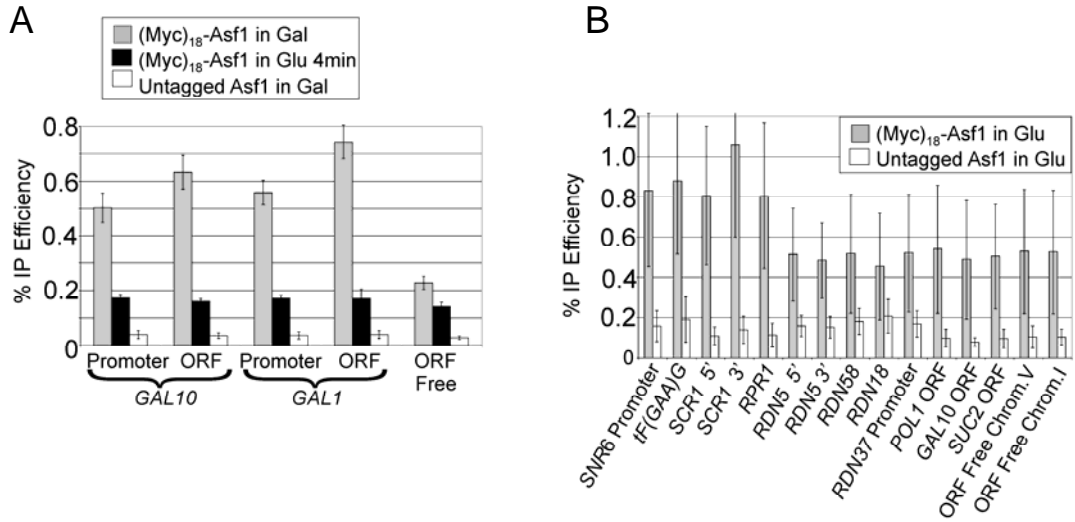


Figure S2. Percent IP Efficiencies at Given Loci in (Myc)<sub>18</sub>-Asf1 versus Untagged Strain

Strains were grown in galactose or glucose medium as indicated, cross-linked, and subjected to ChIP against the Myc epitope. Data are expressed as percent IP efficiencies and represent the average of 3-4 independent experiments with standard deviation error bars shown.