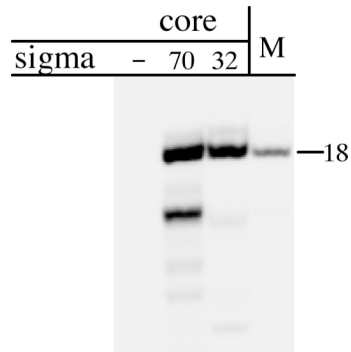


Supplementary Figure 2



Supplementary Figure 2 Formation of the promoter proximal elongation complex (EC18) by $E\sigma^{70}$ and $E\sigma^{32}$ at the *groE* template. Experimental conditions were as in Figure 4B except that the reaction was performed in 150 mM potassium glutamate buffer and without CpA primer. Marker (M) is prepared by RNAP walking on *T7A1* template with $E\sigma^{70}$.